

# The Pittsburgh Sampler

A Newsletter Publication of the Pittsburgh Chapter of the  
*Institute of Industrial Engineers*

DECEMBER 2004

[www.ie.pitt.edu/IIE/](http://www.ie.pitt.edu/IIE/)



## IN THIS ISSUE...

January Meeting	1
November Meeting	
Recap	1
President's Message	2
Member	
Accomplishments	3
IIE Pittsburgh Job Bank	4
Membership Report	5
IIE Pittsburgh Job Bank,	
cont'd.	5
Chapter Activity Report	6
National Engineer's	
Week Call for	
Volunteers	6
Student	
Accomplishments	6
Treasurer's Report	7
Future City Competition	
Call for Judges	7
Chapter Directors and	
Officers	8
IIE Pittsburgh Job Bank	
Information Request	8
2004 Schedule of Events	9

## IIE JANUARY MEETING

<b>What:</b>	"The Semester at Sea Experience for IEs"
<b>Date:</b>	Thursday, January 20, 2005
<b>Speaker:</b>	Bopaya Bidanda, PhD IE Department Chair University of Pittsburgh
<b>Time:</b>	Registration at 6:00 PM Light Dinner Speaker at 6:30 PM
<b>Location:</b>	University of Pittsburgh campus Specific Location TBA
<b>Cost:</b>	\$20 for IIE Members \$25 for non-members \$5 for students
<b>RSVP:</b>	By Monday, January 17th to Amy McHenry <a href="mailto:amchenry@hbmaynard.com">amchenry@hbmaynard.com</a> or 412-921-2400 ext. 231 As always, your reservation is your commitment.

The IE Program at the University of Pittsburgh has been actively involved in the summer semester at sea program. Dr. Bidanda and students will discuss their experiences on this exciting adventure!

Additional Details and Directions will be provided in the January newsletter.

## RECAP OF THE NOVEMBER MEETING

On November 11<sup>th</sup>, the IIE Pittsburgh Chapter meeting was held at Giant Eagle in Robinson Township. Giant Eagle is the leading local retail grocer and has been making improvement using lean concepts such as 5-S, best methods, engineered standards, and work flow design. Currently the project is in the roll-out phase where these lean concepts will be implemented across 222 stores. A total of 15 IIE members, 17 non-members, and 5 students attended the tour which was hosted by Mike Orehowsky, Industrial Engineering Manager, and Mike Caproni, Industrial Engineer.

The tour began with a background presentation on Giant Eagle and the approach taken to implementing lean concepts. The tour was conducted in two separate groups starting at their 5-S Communication board. In every department visited, unique 5-S concepts were evident. A few examples were magnetic labels in the produce refrigerator, seasoning home locations and reorder points in the meat department, and a bar-coded automatic reordering system in the central supply area. Best methods were identified and

implemented in the receiving area, the front end registers, and meat department to standardize and reduce the time to perform tasks. The layout of the meat department and front end registers was redesigned for more efficient flow.

Engineered standards were created after the above implementations to better help Giant Eagle staff each of their departments. The standards provided good documentation of the established Best Methods and 5-S'd conditions. The implementation of all these lean concepts helped saved Giant Eagle a considerable amount of labor hours.

Giant Eagle is currently in the roll-out phase where Industrial Engineers travel to each store to train the stores' management team on these lean concepts. The store management team, with support from the IE department, is then responsible to roll-out the full implementation.

The IIE chapter thanks Mike Orehowsky, Mike Caproni, and Giant Eagle for a great tour.

## PRESIDENT'S MESSAGE

Greetings! First, thanks to all of you who made our November program – the Giant Eagle tour – a huge success. We had over 30 attendees at the Giant Eagle store in Robinson for the informative tour.

### Succession Planning

In our last newsletter I gave you an update on the process our nominating committee uses to select candidates for the IIE Pittsburgh Chapter Board of Directors, Leadership Team, and Committee Members. I am pleased to announce the election results in this newsletter for the 2005 IIE Pittsburgh Chapter Board, Leadership Team, and Committee Members. On December 2 we will hold a meeting of all outgoing and incoming board members, officers and committee chairs. In this meeting the two groups will work together for a smooth transition into the new program year. The 2005 Board, Leadership Team, and Committee Members are listed in the figure at right →.

### Year End

It's hard to believe this is our final newsletter for 2004. I want to personally thank all of you for your commitment to IIE. We have worked hard this year to energize our chapter, and we will continue to do that in 2005. For those that stay involved by attending our programs, I think you will find an exciting lineup for 2005. For those of you who are members but do not attend programs, I encourage you to think about attending some programs in 2005. For those of you getting more involved on chapter committees, I assure you that we will look for ways to improve our processes and better serve the needs of our membership. On all levels, we are putting plans in place that will continue to serve the needs of IEs in the Pittsburgh Chapter. Thanks to everyone for your efforts to make 2004 very successful for our chapter. I look forward to working with all of you in 2005.

If you have any questions about getting more involved on one of the teams listed at the end of this newsletter, please contact me directly at [jarnold@hbmaynard.com](mailto:jarnold@hbmaynard.com).

### Jeff Arnold

IIE Pittsburgh Chapter President

	POSITION	NAME	COMPANY
BOARD OF DIRECTORS	Board Co-Chair	Don Ziegler	GENCO
	Board Co-Chair	Joe Kikta	Mellon Financial Corp.
	Board (1st Year)	Mark Coffey	UPS
	Board (1st Year)	Karen Bursic	University of Pittsburgh
	Board (1st Year)	Mary Loera	PPG
OFFICERS	President	Jeff Arnold	H. B. Maynard & Co., Inc.
	Vice President	Donna Degenhart	
	Secretary	Stacie Amorose	Pittsburg Regional Healthcare Initiative (PRHI)
	Treasurer	Jennifer Palmiero	FedEx Ground
COMMITTEES	Programs Chair	Amy McHenry	H. B. Maynard & Co., Inc.
	Programs	Doug Rabeneck	H. B. Maynard & Co., Inc.
	Programs	John Markowitz	Executive Toolkit
	Programs	Karen Bursic	University of Pittsburgh
	Programs	Joe Kikta	Mellon Financial Corp.
	Programs	Barb Grabowski	Alcoa
	Membership Chair	Errol Restelli	H. B. Maynard & Co., Inc.
	Membership	Nathan Osborne	H. B. Maynard & Co., Inc.
	Membership	Jon Huesdash	H. B. Maynard & Co., Inc.
	Membership	Lindsay Hollowood	
	Membership	John Petrachonis	H. B. Maynard & Co., Inc.
	Membership	Jim Kinter	Curtiss Wright EMD
	Student Relations Chair	Bryan Norman	University of Pittsburgh
	Communications Chair	Jacki Szymanski	H. B. Maynard & Co., Inc.
	Web Master	Jay Rajgopal	University of Pittsburgh
	Community Affairs Chair	Pat Kelly Lee	Executive Toolkit Inspiration Point

## HAVE YOU LOOKED AROUND YOUR OFFICE LATELY?

We are asking active IIE members to 'look inside' their own organizations for others working in an I.E. capacity who might benefit from membership in our chapter. If you know of someone you think might be interested, please encourage them to come to our next program.

If you know other industrial engineers or people working in an industrial engineering capacity, encourage them to come to one of our upcoming meetings and join IIE. Membership forms are available at IIE's home page <http://www.iienet.org> or you can contact Errol Restelli at (412) 921-2400 x232.

Note: If your contact information changes (i.e. address, company, phone number, e-mail address), please contact IIE National. Their phone number is (770) 449-0460 or 1-800-494-0460. Once you contact IIE National, your address change should be reflected on our next mailing list, which is received from IIE National each month.

You belong to your professional society because your career is important to you.

You want to continue your education because lifelong learning and professional development are important to you.

You need an advanced degree from a program with a great reputation...then you need



## The Industrial Engineering Masters Program at the University of Pittsburgh

- *Engineering Management*
- *Information Systems*
- *New Product Development and Manufacturing*
- *Operations Research*

Earn your advanced degree from a nationally ranked program that is **flexible** and led by highly-respected faculty members who will help you prepare to be a **leader** in your industry.

Evening courses. Personal attention. Apply Now!

To further inquire about our program, please call (412) 624-9830 or check out <http://www.engr.pitt.edu/industrial>

## MEMBER ACCOMPLISHMENTS

The IIE Pittsburgh Chapter congratulates Curtiss-Wright EMD and its Vice President and General Manager, Terri Marts, for winning the "2004 Manufacturer of the Year" Award, sponsored by the Pittsburgh Business Times on November 30, 2004.

This award recognizes one of the presidents of the Manufacturer of the Year finalist companies from the small, medium and large categories. Curtiss-Wright Electro-Mechanical Corporation was a finalist again this year in the "Large Size Category." In total, there were 14 local manufacturing companies – and 14 company presidents – competing in this year's Manufacturer of the Year program.

The IIE Pittsburgh Chapter is proud to have EMD employees as active members in the Pittsburgh



Chapter on our IIE leadership teams, committees and Board of Directors.

Congratulations Terri and EMD!

## NATIONAL IIE ELECTIONS

The following Pittsburgh Chapter members are running for National IIE positions. Polls open December 17, 2004. Please consider supporting them as you vote in the upcoming IIE elections!

Roman M. Hlutkowsky - Senior Vice President At Large for Industry  
Jayant Rajgopal - Technical Vice President

## IIE PITTSBURGH JOB BANK

**Looking for an Outstanding Job?** Begin your search at IIE's new Career Center, which offers all the features you need.

- Posting your resume is free, for as long as you want.
- Your resume remains anonymous while employers view it. Only when you give permission will your resume contact information be revealed.
- You can carefully select the jobs that most interest you by narrowing your search criteria by job function, industry, and location.
- By creating a Job Agent, new jobs that match your search criteria will be e-mailed to you for your convenience.
- Your free "My Career" account will let you store job openings, resumes, cover letters, and more. Manage your job search online and with ease.

What are you waiting for? Give your career the boost it needs and go to [www.iienet.org/careercenter](http://www.iienet.org/careercenter). **Are you an employer looking for top-notch employees?** We have your needs covered, too. Go to [IIE's Career Center](#) and see all the services IIE's Career Center has to offer!

### Industrial Engineer – Franklin, PA

#### Job Specifications:

- Establish proper methods for production operators, as well assist in training operators on proper methods/ergonomics.
- Observe workstations & operators in action to recommend and implement ergonomic changes.
- Create SOP's for workstations.
- Conduct time & motion studies.
- Develop labor staff & machine requirements based on marketing forecasts.
- Review employee efficiency percentages to develop labor standards.
- Use CAD for facility and equipment layout.
- Work with Product Engineers/Managers to identify suppliers.
- Train, administer, and monitor OSHA programs.

#### Requirements:

- BSIE or equivalent experience based education
- Min 3-6 years manufacturing experience w/ 2-4 years ""traditional IE experience""
- Strong math and statistical analysis abilities
- JD Edwards experience
- Strong communications and interpersonal skills

Contact:  
Dawn Vazzana  
Executive Recruiter  
(412) 369-9501  
[dawn@basilone-oliver.com](mailto:dawn@basilone-oliver.com)

### Part-Time Process Engineer

This is a Part-Time Process Engineer position through Top Echelon Network of Recruiters, Inc. and is located in Pittsburgh, PA.

Responsibilities of the position include:

- Design, test and implement process improvements to meet production safety cost improvement & environmental goals
- Provide Technical Support for Operations Safety Quality and Environmental Departments
- Determine process capabilities for production equipment
- Identify the Key Performance Indicators (KPIs) for the processes and the application of SPC to monitor those characteristics
- Identify improvements in equipment processes or inspection technologies necessary to assure satisfactory process capability and achieve cost improvements
- Prepare Process Scopes for significant process changes; participate in CEP implementation teams
- Assist in the development of operational department training material
- Manage mill experiments and corrective actions
- Manage cost and time constraints on projects
- Develop and maintain Standard Operating Procedures (SOPs) for various operations departments
- Prepare flow diagrams and charts

Experience/Skill Requirements:

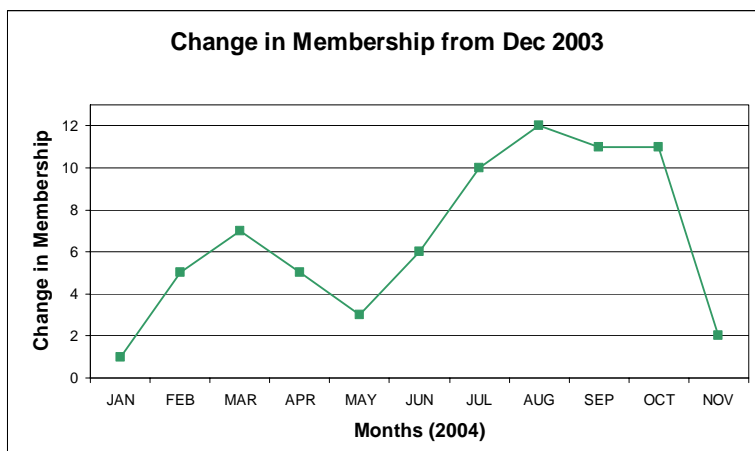
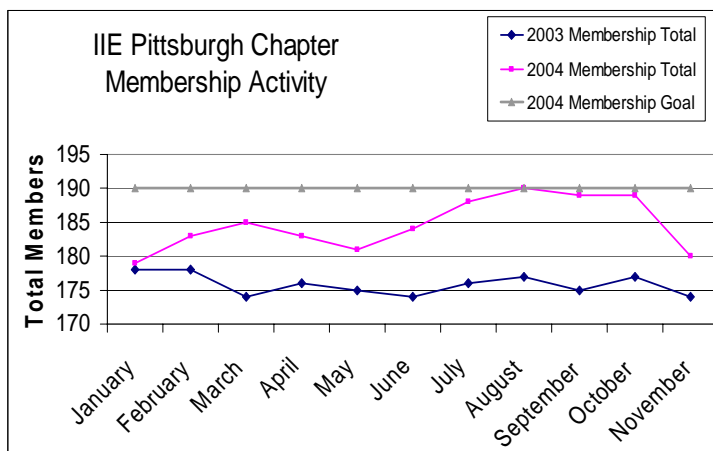
- Bachelors Degree in Engineering, preferably Metallurgical or Materials Science
- Problem analysis and problem resolution at both a strategic and functional level
- Desire to spend considerable amount of time working on shop floor with operators
- SPC and Six Sigma Experience
- Computer Proficiency, MS Office preferred
- Experience with forging and rolling of metal



Contact: Jim Allen, [JobTarget.13050157@postingwildcard.com](mailto:JobTarget.13050157@postingwildcard.com)

## MEMBERSHIP REPORT

This month's membership report displays two membership graphs below: the Monthly Summary graph and a graph of Membership Change from December 2003. These graphs display a recent decrease in membership. This decrease will be combated by the induction of the new membership team for 2005. The team, who will be formerly announced in the new year, will be focused on tactical initiatives to grow membership. The Leadership team will be supporting these initiatives by providing excellent programs, events, and social gatherings to highlight the benefits of membership.



## IIE PITTSBURGH JOB BANK, CONTINUED

### Engineering Data Manager

#### COMPANY

Ariba/Formerly FreeMarkets is based in Pittsburgh, PA. Ariba helps enterprises "do more with less" by providing focused spend management services and software solutions to accelerate significant bottom line results.

#### JOB SUMMARY

The Engineering Data Manager role within Global Sourcing Operations is responsible for ensuring complete and accurate data availability for a customer's Enterprise Spend Management initiatives. The Engineering Data Manager will be an integral member of the execution team and interact with other internal project team members as well as various customer and supplier organizations. The Engineering Data Manager will manage the collection, analysis, and publication of data and design documents for assigned commodities and/or project initiatives.

#### ESSENTIAL DUTIES AND RESPONSIBILITIES

- Responsible for ensuring the technical completeness of assigned projects and key inputs into analysis and strategic direction
- Performs engineering and data management activities such as data file maintenance, data collection management, and RFQ document development
- Works effectively with internal and external stakeholders defining appropriate data strategy for each project
- Establishes strong working relationships with internal and external parties, such as customers and

suppliers, at all levels

- Leverages prior experience or is capable of quickly developing knowledge in a certain industry or commodity
- Evaluates and continuously improves Ariba tools and processes
- All other duties as assigned

#### MINIMUM QUALIFICATIONS

- Proficiency in data manipulation techniques and tools, particularly, Microsoft Excel
- CAD training, and/or the ability to interpret manufacturing drawings, bills of material, and specifications
- Ability to provide information about manufacturing methods based upon drawings, specs, etc.
- Excellent communication, interpersonal & team skills
- Methodical process orientation
- Exceptional problem solving aptitude
- Polished customer service skills
- Project management capabilities
- German Fluency Required

#### PREFERRED QUALIFICATIONS

Bachelors degree in Mechanical, Electrical or Industrial engineering, or 2 years experience in a manufacturing or assembly operation. **We are an Equal Opportunity Employer or EOE, M/F/D/V** To apply for this position, please go to:

<http://ariba.recruitmax.com/ENG/candidates/default.cfm?szCategory=jobprofile&szOrderID=2079>

## CHAPTER ACTIVITY REPORT

Written by Mary Loera

We have reached the end of another successful year in the Pittsburgh chapter of IIE. It has been a pleasure to serve as the chapter's vice-president. I will be moving into a new role next year on the board of directors. I look forward to serving the chapter in this new capacity. Technically, I will still have one more obligation early next year as this year's vice president. I will be completing the CAR and submitting it to IIE National in February, 2005. With this in mind, please take a moment to think about any activities in which you may have participated that could benefit our CAR score. Examples of some activities that can potentially help our score are:

- Speaking to students about the Industrial Engineering profession
- Publishing an article in IIE publications, newspaper, etc.
- Volunteering with a non-profit organization, hospital, etc. to improve a process or service

If you have participated in an activity that you think may help our chapter's score, please let me know. I can be reached at (412) 434-3353 or via email at [loera@ppg.com](mailto:loera@ppg.com).

---

## NATIONAL ENGINEER'S WEEK CALL FOR VOLUNTEERS

This year National Engineers' Week will be held at the Carnegie Science Center on February 18 and 19. This fun event allows us to personally introduce students to the field of Industrial Engineering. We plan to do a simulation demonstration for the students.

Please contact Mary Loera at [loera@ppg.com](mailto:loera@ppg.com) or (412) 434-3353 to volunteer for this event. When you sign up for a two to three hour shift, you have the rest of the day to explore the exhibits at no charge. Plus you receive a FREE T-shirt for volunteering! Come join us!



This could be **YOU!!!!**

---

## STUDENT ACCOMPLISHMENTS

Not only do University of Pittsburgh Industrial Engineering Students excel in the classroom, but check out these super accomplishments:

Senior **Lauren Horstman** was recently named Pitt's 2004 School of Engineering Co-op Student of the Year, recognized for her work at H.B. Maynard and Company. She is now in a national competition for the National Student of the Year Award. The winning student will receive a cash award and will be invited to the CIEC Conference to receive their award at the CIEC Awards Banquet on February 3, 2005 in Savannah, Georgia. Good luck Lauren!

**Lindsey Farrell**, a junior and IIE Student Chapter Treasurer, was crowned Homecoming Queen during halftime at the Pitt's Homecoming Football Game on October 23.

Junior **Amy Kunich** was named MVP for a recent Women's Basketball Tournament at the University of North Carolina, Greensboro. The Panthers won the tournament and Amy scored seven points with six rebounds and three assists.



# Congratulations to these outstanding students!

## TREASURER'S REPORT

INSTITUTE OF INDUSTRIAL ENGINEERS CHAPTER IRS REPORT			
4/1/04 - 3/31/05			
CHAPTER NAME: PITTSBURGH		CHAPTER NO.:	3
FEDERAL EMPLOYER I.D. NUMBER: 25-6062810		REGION:	5
	INCOME	EXPENSES	
1. DUES INCOME	\$ 1,491.75	XXX	
2. INTEREST INCOME	1.72	XXX	
3. CONTRIBUTIONS RECEIVED (A)	-	XXX	
4. CONFERENCES (B)	-	100.00	
5. MONTHLY MEETINGS	5,245.00	3,993.04	
6. NEWSLETTERS (B)	-	-	
7. MISCELLANEOUS (B)(C)	-	-	
8. CONTRIBUTIONS AND GRANTS PAID	XXX	-	
9. PUBLICATIONS/NEWSLETTERS	XXX	313.03	
10. PROGRAMS/MEETINGS	XXX	-	
11. STUDENT DEVELOPMENT (E)	XXX	256.00	
12. COMMUNITY SERVICES	XXX	-	
13. MEMBER SERVICES	XXX	-	
14. OFFICERS & CHAPTER MEETINGS	XXX	-	
15. CHAPTER OPERATIONS SUPPLIES	XXX	7.40	
16. MISCELLANEOUS (C)	XXX	27.00	
17. TOTAL	\$ 6,738.47	\$ 4,696.47	
<b>ENTER: 18. NET WORTH 4/01/04</b>		\$ 3,952.03	
ADD 4/01/04-3/31/05 INCOME		\$ 6,738.47	
SUBTOTAL	\$ 10,690.50		
LESS 4/01/04-3/31/05 EXPENSES		\$ (4,696.47)	
NET WORTH 3/31/05		\$ <u>5,994.03</u>	
19. STATEMENT OF NET WORTH			
<b>ENTER: PETTY CASH ACCOUNT BALANCE</b>	\$ -		
<b>ENTER: CHECKING ACCOUNT BALANCE</b>	\$ 3,253.06		
<b>ENTER: SAVINGS ACCOUNT BALANCE</b>	\$ 2,740.97		
TOTAL *	\$ <u>5,994.03</u>		

## FUTURE CITY COMPETITION CALL FOR JUDGES

We are currently searching for volunteers to serve as judges for the Future City Competition for 7th & 8th grade. The Future City Competition is associated with National Engineers' Week and will be held on Saturday, January 15, 2005. If you would like to serve as a judge, please contact Mary Loera at (412) 434-3353. For more information about the competition, please go to <http://futurecitypittsburgh.org/>.

This is a fun event, and I strongly encourage you to participate!



## CHAPTER DIRECTORS AND OFFICERS

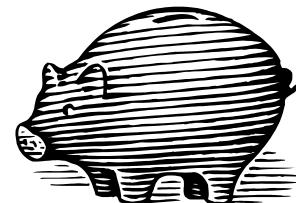
Pittsburgh IIE Chapter 2004 Leadership Team (as of 5/25/04)										
POSITION	NAME	COMPANY	ADDRESS LINE1	LINE2	CITY	ST	ZIP	PHONE		EMAIL
Board	Angela Konop	FedEx Ground	1000 FedEx Dr.		Moon Township	PA	15108	412.859.2678	w	angela.konop@fedex.com
									c	
Board	Roman Hlutkowsky	FedEx Ground	1000 FedEx Dr.		Moon Township	PA	15108	412.262.6021	w	roman.hlutkowsky@fedex.com
									c	
Board	Bobbi Ferguson	Curtiss-Wright EMD	1000 Cheswick Ave.		Cheswick	PA	15024	724.275.5155	w	bobbi.ferguson@emd.curtisswright.com
									c	
Board (1st Year)	Joe Kikta	Mellon Financial Corp.	151-1575 One Mellon Center		Pittsburgh	PA	15258	412.236.6193	w	kikta.is@mellon.com
								412.889.1444	c	
Board (1st Year)	Don Ziegler	GENCO	100 Papercraft Park		Pittsburgh	PA	15238	412.820.2296	w	zieglerd@genco.com
								412.956.2660	c	
President	Jeff Arnold	H. B. Maynard & Co., Inc.	Eight Parkway Center	4th Floor	Pittsburgh	PA	15220	412.921.2400 x245	w	jarnold@hbmavnard.com
								412.973.1748	c	
Vice President	Mary Loera	PPG	One PPG Place	Building 5, Floor 5	Pittsburgh	PA	15272	412.434.3353	w	loera@ppg.com
								412.818.3032	c	
Secretary	Amy McHenry	H. B. Maynard & Co., Inc.	Eight Parkway Center	4th Floor	Pittsburgh	PA	15220	412.921.2400 x231	w	amchenry@hbmavnard.com
								412.352.2431	c	
Treasurer	Jennifer Palmiero	FedEx Ground	1000 FedEx Dr.		Moon Township	PA	15108	412.859.2836	w	jennifer.palmiero@fedex.com
									c	
Programs Chair	Karen Bursic	University of Pittsburgh	1048 Benedum Hall	Dept of IE	Pittsburgh	PA	15261	412.624.9837	w	kbursic@enr.pitt.edu
									c	
Programs	Doug Rabeneck	H. B. Maynard & Co., Inc.	Eight Parkway Center	4th Floor	Pittsburgh	PA	15220	412.921.2400 x146	w	drabeneck@hbmavnard.com
								412.999.9728	c	
Programs	Suzanne Moses	FedEx Ground	1000 FedEx Dr.		Moon Township	PA	15108	412.859.2325	w	suzanne.moses@fedex.com
									c	
Programs	Joe Kikta	Mellon Financial Corp.	151-1575 One Mellon Center		Pittsburgh	PA	15258	412.236.6193	w	kikta.is@mellon.com
								412.889.1444	c	
Programs	Barb Grabowski	Alcoa	201 Isabella St.		Pittsburgh	PA	15212	412.553.2229	w	barbara.grabowski@alcoa.com
								412.303.8201	c	
Membership Chair	Errol Restelli	H. B. Maynard & Co., Inc.	Eight Parkway Center	4th Floor	Pittsburgh	PA	15220	412.921.2400 x232	w	erestelli@hbmavnard.com
								412.576.5594	c	
Student Relations Chair	Bryan Norman	University of Pittsburgh	1033 Benedum Hall	Dept of IE	Pittsburgh	PA	15261	(412) 624-9841	w	banorman@enr.pitt.edu
									c	
Communications Chair	Pat Premick	H. B. Maynard & Co., Inc.	Eight Parkway Center	4th Floor	Pittsburgh	PA	15220	412.921.2400 x133	w	poremick@hbmavnard.com
								412.901.5487	c	
Web Master	Jay Rajgopal	University of Pittsburgh	1039 Benedum Hall	Dept of IE	Pittsburgh	PA	15261	412.624.9840	w	rajgopal@pitt.edu
									c	
Community Affairs Chair	Pat Kelly Lee	Toolkit	500 Geyser Rd.		Pittsburgh	PA	15205	412.519.5409	w	pkl@toolkitllc.com
		Inspiration Point							c	

## IIE PITTSBURGH JOB BANK INFORMATION REQUEST

The purpose of the job bank is to match qualified IIE professionals with available jobs. In the past several years, we have been successful in placing IIE members with employers.

If you or your company are looking for new employees, send a description of the position you wish to fill to the address below. We will publish your position in our monthly newsletter. Please try to limit your descriptions to 50 words or less and include a phone number, address, fax number, and e-mail so interested parties can contact you directly. Please send all descriptions to:

Pat Premick  
 H. B. Maynard and Company, Inc.  
 Eight Parkway Center  
 Pittsburgh, PA 15220  
 Phone: 412.921.2400 ext. 133  
[ppremick@hbmavnard.com](mailto:ppremick@hbmavnard.com)



You can also advertise your job openings on the Pittsburgh IIE Chapter website: <http://www.ie.pitt.edu/IIE/jobs.html>

INSTITUTE OF  
INDUSTRIAL ENGINEERS

Pittsburgh Chapter  
Area I, District 5  
Number 3



Eight Parkway Center  
Suite 400  
Pittsburgh, PA 15220

Pittsburgh Chapter IIE Website - [www.ie.pitt.edu/IIE](http://www.ie.pitt.edu/IIE)

National IIE Website - [www.iienet.org](http://www.iienet.org)



## 2005 Schedule of Events...

January 20, 2005

Semester at Sea

*Stay tuned for updates  
to the schedule!!*