

# The Pittsburgh Sampler

A Newsletter Publication of the Pittsburgh Chapter of the  
*Institute of Industrial Engineers*

OCTOBER 2004

[www.ie.pitt.edu/IIE/](http://www.ie.pitt.edu/IIE/)



## IN THIS ISSUE...

November Meeting	1
November Program	1
President's Message	2
Have you looked...?	2
Recap of October Meeting	3
Membership Report	4
IIE Pittsburgh Job Bank	4
Chapter Activity Report	5
IIE Pittsburgh Job Bank, cont'd.	5
National Engineer's Week Call for Mentors	5
Treasurer's Report	6
Future City Competition Volunteers Needed	6
Chapter Directors and Officers	7
IIE Pittsburgh Job Bank Information Request	7
2004 Schedule of Events	8

## IIE NOVEMBER MEETING

- What:** Giant Eagle Tour
- Date:** Thursday, November 11, 2004
- Time:** Registration 6:00 PM, Tour at 6:30 PM
- Duration:** The tour and a Q & A period will be approximately 1 hour
- Location:** Giant Eagle in Robinson Township
- Cost:** \$5 for IIE Members  
\$10 for non-members  
\$5 for students
- Dinner:** Mad Mex across the street from Giant Eagle.  
We will be ordering from the menu
- RSVP:** By Monday, November 8<sup>th</sup> to Karen Bursic;  
[kbursic@enr.pitt.edu](mailto:kbursic@enr.pitt.edu); (412) 624-9837  
*As always, your reservation is your commitment.*

## NOVEMBER 2004 PROGRAM

We are challenged with analyzing and improving processes in many work environments. It is only natural that we have this mindset in our personal lives. A great example is when we are shopping in a retail grocery store. We analyze queue lengths, visual indicators, quality of goods, employee procedures, and the cost of merchandise. Giant Eagle, a local retail grocery leader, has been actively making improvement in these areas. They have done so through the implementation of many lean concepts such as 5-S, best methods, and work flow improvements. The goal is to enhance the customer experience, build a better employee culture, and increase efficiencies. This month's IIE tour will review how Giant Eagle is utilizing Industrial Engineering techniques to improve operations. We hope you can join us to see how Pittsburgh's number 1 grocery store is striving to achieve operational excellence in 220 stores.

### Directions (from Downtown):

1. Take 279 towards the airport
2. After passing I-79, continue on US-22 / US-30 towards the airport
3. Take the exit toward PA-60 S / Moon Run
4. Turn left onto Campbells Run Rd
5. Turn Left onto PA-60 / Steubenville Pike
6. Giant Eagle is 200 yards on your left



## PRESIDENT'S MESSAGE

Greetings! First, thanks to all of you who made our annual Senior/Student Chapter Night a huge success. We had 33 Senior Chapter members, 46 Students, and 5 Corporate Sponsors attend the event in Oakland. The night entailed networking over appetizers/drinks, the presentation of the University of Pittsburgh Student Award, and Jeremy Weinstein speaking about an IE's Journey. We also distributed the trendy new IIE Pittsburgh Chapter bookmarks to remind attendees about the benefits of their local IIE chapter. In case you missed out on Student Night, we will also have these bookmarks available at the November program. I appreciate the hard work everyone put into the event. Read on in the newsletter for a student's perspective on the event.

### Succession Planning

With autumn passing by quickly our Leadership Team has begun to focus on succession planning for next year. This involves nominations for all officers and committee chairperson positions. The nominating committee, made up of myself, Karen Bursic, Bobbi Ferguson, and Kim Needy, met on October 7<sup>th</sup> to review nominees for each position. The nominees will be contacted in the next few weeks where we will discuss roles and job descriptions for the positions. In December we will hold a meeting of all outgoing and incoming officers and committee chairs. In this meeting the two groups will work together for a smooth transition into the new program year.

### Where Leadership Meets Giving Back

On Tuesday, September 21, I had the opportunity to present at the University of Pittsburgh Industrial Engineering Seminar. The topic of my presentation was one that many of you have heard me say repeatedly: that involvement in our local IIE chapter can help you enhance your leadership skills while giving back to the profession of Industrial Engineering.

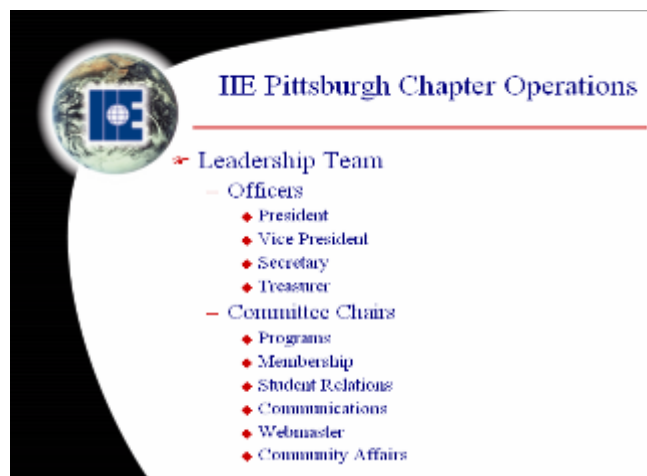
We discussed various roles within the local chapter, including being part of the Leadership Team (roles listed in figure) or being a contributing member of one of the committees. There are many opportunities to get involved.

I explained to the students some of the internal leadership training/group-study we are undergoing at my company and how my roles in the IIE Pittsburgh Chapter have helped me to practice the new skills I am learning outside of my typical work environment. I also challenged the students to get involved in IIE early and not wait 6 or 7 years like I did. As I did with the students in the seminar, I encourage all of you to consider how you might get involved in our chapter as a way of discovering the place where leadership meets giving back.

If you have any questions about getting more involved on one of the teams listed at the end of this newsletter, please contact me directly at [jarnold@hbmaynard.com](mailto:jarnold@hbmaynard.com) or we can discuss at the Giant Eagle Tour on November 11. See you there!

**Jeff Arnold**

IIE Pittsburgh Chapter President



## HAVE YOU LOOKED AROUND YOUR OFFICE LATELY?

We are asking active IIE members to 'look inside' their own organizations for others working in an I.E. capacity who might benefit from membership in our chapter. If you know of someone you think might be interested, please encourage them to come to our next program.

If you know other industrial engineers or people working in an industrial engineering capacity, encourage them to come to one of our upcoming meetings and join IIE. Membership forms are available at IIE's home page <http://www.iienet.org> or you can contact Errol Restelli at (412) 921-2400 x232.

**Note:** If your contact information changes (i.e. address, company, phone number, e-mail address), please contact IIE National. Their phone number is (770) 449-0460 or 1-800-494-0460. Once you contact IIE National, your address change should be reflected on our next mailing list, which is received from IIE National each month.

## RECAP OF OCTOBER MEETING: A STUDENT'S PERSPECTIVE

IIE Student Night was held on Thursday, October 7<sup>th</sup>. The night began with a social hour of networking among student chapter members and professional members. After dinner Corporate Vice President of Global Procurement Operations in the Whirlpool Corporation and current IIE President, Jeremy S. Weinstein, spoke about his career paths through the industrial engineering profession and through IIE. The student chapter members were very excited about the networking opportunities and were pleased with many of the professional contacts they made throughout the night. In addition, we were happy to have the opportunity to hear about the struggles and successes of Mr. Weinstein to inspire us to continue working hard in school and in the beginning of our professional careers. Lastly, in my four years of attending the IIE Student Night dinner, the attendance and participation this year was the highest I have seen, so overall it was a successful night!

### Stacey Williamson

University of Pittsburgh Student Chapter President

## OCTOBER STUDENT CHAPTER NIGHT... A SUCCESSFUL ANNUAL EVENT CONTINUES!

This year's Student Chapter Night drew 39 senior chapter members and guests and 46 students to the Holiday Inn in Oakland for an evening of networking, great food, and IIE news. We had the opportunity to hear the current President of IIE, Mr. Jeremy Weinstein, speak about his journey in the professional world of Industrial Engineering. Jeff Arnold, IIE Pittsburgh Chapter President, presided over the meeting and re-emphasized the benefits of membership in IIE that are spelled out on the bookmarks that H.B. Maynard and Company generously contributed to the evening's attendees.

After dinner, Jeff introduced Dr. Bopaya Bidanda, Chair of the Industrial Engineering Department at the University of Pittsburgh, who presented the annual "Outstanding Student Award" to IIE Student Chapter President Stacey Williamson. Stacey's peers nominated three candidates for the award and the IE faculty at Pitt voted on the winner. Stacey has been a very active member of the student chapter of IIE while participating in many other University organizations and maintaining a very high QPA. Congratulations, Stacey!

Harvey Wolfe, Professor of IE and former National IIE President, then introduced Mr. Weinstein. Jerry's presentation focused on his career path and how an IE can really make a difference in the corporate world. He spoke specifically about how IIE holds up the two pillars of the profession – the academic and industry sides. He also outlined the specific purposes of the IIE organization and how it contributes to promoting and maintaining the IE profession nationally and internationally. Jerry specifically

outlined the various compelling reasons to have a strong professional society and for individuals to belong to that society.

We would once again like to thank all the individuals and organizations that helped to make this event possible. In addition to the sponsor companies (Executive Toolkit, GENCO, FedEx Ground, Maynard, and the Pitt IE Department) there were attendees from companies such as UPS, PNC Bank, Giant Eagle, PPG, Curtiss-Wright EMD, the Pittsburgh Regional Healthcare Initiative, and Innovative Systems, Inc. all of whom contributed to the evening's success. The evening confirmed that there is great energy and support for the IE profession in Pittsburgh!

**Karen Bursic**, 2004 Programs Chair

### Student Chapter Night Sponsors:



### May I have your attention, please?

The following Pittsburgh Chapter members are running for National IIE positions. Please consider supporting them as you vote in the upcoming IIE elections!

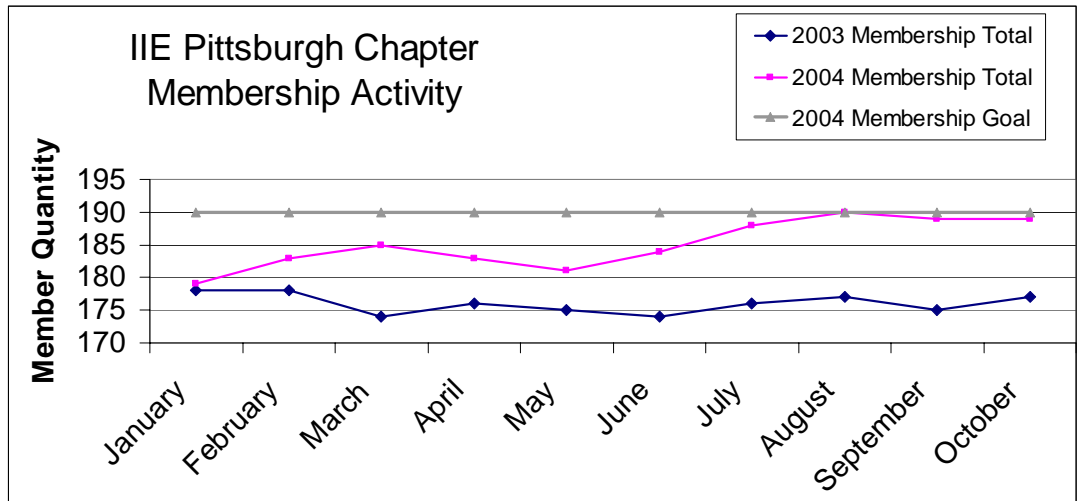
**Roman M. Hlutkowsky** - Senior Vice President At Large for Industry  
**Jayant Rajgopal** - Technical Vice President

## MEMBERSHIP REPORT

Membership remains strong as 2004 enters the fall and winter months. We have a current membership of 189. Be sure to keep an eye out in your company for potential members.

The membership committee would like to extend a warm welcome to our seven new members:

- Carolyn Raymer
- Kerri Alderman
- Michael Speese
- Stacie Amorose
- James Bavuso
- Jeremy Gracik



## IIE PITTSBURGH JOB BANK

**Looking for an Outstanding Job?** Begin your search at IIE's new Career Center, which offers all the features you need.

- Posting your resume is free, for as long as you want.
- Your resume remains anonymous while employers view it. Only when you give permission will your resume contact information be revealed.
- You can carefully select the jobs that most interest you by narrowing your search criteria by job function, industry, and location.
- By creating a Job Agent, new jobs that match your search criteria will be e-mailed to you for your convenience.
- Your free "My Career" account will let you store job openings, resumes, cover letters, and more. Manage your job search online and with ease.

What are you waiting for? Give your career the boost it needs and go to [www.iienet.org/careercenter](http://www.iienet.org/careercenter). **Are you an employer looking for top-notch employees?** We have your needs covered, too. Go to [IIE's Career Center](#) and see all the services IIE's Career Center has to offer!

### Director of Engineering

This opening is with a Fortune 500 Company, and is located in the Northeast, in the tri-state area of PA/NJ/NY. The compensation package is in the range of \$150k to \$200k and reports to the Senior Vice President of Logistics, with promotional capabilities to a VP capacity. The position requires a Bachelor's degree and 10 years of experience.

Responsible for:

- Strategy including network modeling and optimization
- Industrial Engineering - responsible for determining lay out and design, material flow, engineered standards, best methods, and labor planning
- Mechanical Engineering - responsible for determining all material handling requirements and specifications in this automated, narrow aisle, high bay, case pick environment
- Facilities management
- MIS - Responsible for determining DC WMS needs and design specifications that integrate with corporate MIS
- Asset management, project management, and budgetary responsibility

Anyone having interest or questions may contact:

Stacy Rini, Purcell International Group  
[srini@purcellintl.com](mailto:srini@purcellintl.com)  
(619) 908-3000 ext. 108  
(619) 908-3011 - Fax

## CHAPTER ACTIVITY REPORT

Written by Mary Loera

We are moving toward the last days of the calendar year, and the final days of our Chapter's "reporting" year. I am in the process of "making my list and checking it twice" to determine activities that will help us score CAR points. If you have participated in an activity that you think may help our chapter's score, please let me know. I can be reached at (412) 434-3353 or via email at [loera@ppg.com](mailto:loera@ppg.com). Examples of some activities that can potentially help our score are:

- Speaking to students about the Industrial Engineering profession
- Publishing an article in IIE publications, newspaper, etc.
- Volunteering with a non-profit organization, hospital, etc. to improve a process or service

We have had a good year thus far, and we want it to continue. Here are a few things you can do to help:

- Attend the November meeting – Karen Bursic and her Programs committee has done a wonderful job this year planning the monthly meetings. Trust me – you will find the meeting and the people attending interesting (really!).
- Renew your membership and encourage fellow IEs to become active in IIE – Your membership provides you with the most up-to-date information pertaining to the Industrial Engineering profession as well as those 'oh so valuable' networking opportunities. You may even find your next job through IIE.
- Commit to become involved in chapter activities and leadership – you will get more out of your membership if you are actively involved in the chapter.

## NATIONAL ENGINEER'S WEEK CALL FOR VOLUNTEERS

This year National Engineers' Week will be held at the Carnegie Science Center on February 18 and 19. This fun event allows us to personally introduce students to the field of Industrial Engineering. We plan to do a simulation demonstration for the students.

Please contact Mary Loera at [loera@ppg.com](mailto:loera@ppg.com) or (412) 434-3353 to volunteer for this event. When you sign up for a two to three hour shift, you have the rest of the day to explore the exhibits at no charge. Plus you receive a FREE T-shirt for volunteering! Come join us!



This could be **YOU!!!!**

## MEMBER NEWS AND ACCOMPLISHMENTS

We are pleased to announce the recent promotions of four industrial engineers at Maynard. Between these four individuals, they have a combined 43 years of experience with Maynard and over 55 years industrial engineering experience helping retailers, manufacturers, and distribution centers eliminate waste and improve workforce performance! We offer our congratulations to:

**John Connors** - Vice President  
**Jeff Peretin** - Vice President  
**Jim Wilk** - Business Development Manager  
**Doug Rabeneck** - Business Development Manager



# Congratulations!

# TREASURER'S REPORT

INSTITUTE OF INDUSTRIAL ENGINEERS CHAPTER IRS REPORT			
4/1/04 - 3/31/05			
CHAPTER NAME: PITTSBURGH		CHAPTER NO.:	3
FEDERAL EMPLOYER I.D. NUMBER: 25-6062810		REGION:	5
	INCOME	EXPENSES	
1. DUES INCOME	\$ 809.25	XXX	
2. INTEREST INCOME	1.72	XXX	
3. CONTRIBUTIONS RECEIVED (A)	-	XXX	
4. CONFERENCES (B)	-	100.00	
5. MONTHLY MEETINGS	1,900.00	1,150.78	
6. NEWSLETTERS (B)	-	-	
7. MISCELLANEOUS (B)(C)	-	-	
8. CONTRIBUTIONS AND GRANTS PAID	XXX	-	
9. PUBLICATIONS/NEWSLETTERS	XXX	313.03	
10. PROGRAMS/MEETINGS	XXX	-	
11. STUDENT DEVELOPMENT (E)	XXX	256.00	
12. COMMUNITY SERVICES	XXX	-	
13. MEMBER SERVICES	XXX	-	
14. OFFICERS & CHAPTER MEETINGS	XXX	-	
15. CHAPTER OPERATIONS SUPPLIES	XXX	-	
16. MISCELLANEOUS (C)	XXX	27.00	
17. TOTAL	\$ 2,710.97	\$ 1,846.81	
<b>ENTER: 18. NET WORTH 4/01/04</b>		\$ 3,952.03	
ADD 4/01/04-3/31/05 INCOME		\$ 2,710.97	
SUBTOTAL	\$ 6,663.00		
LESS 4/01/04-3/31/05 EXPENSES		\$ (1,846.81)	
NET WORTH 3/31/05		\$ 4,816.19	
19. STATEMENT OF NET WORTH			
ENTER: PETTY CASH ACCOUNT BALANCE	\$ -		
ENTER: CHECKING ACCOUNT BALANCE	\$ 2,075.22		
ENTER: SAVINGS ACCOUNT BALANCE	\$ 2,740.97		
TOTAL *	\$ 4,816.19		

## FUTURE CITY COMPETITION/RUBE GOLDBERG MACHINE VOLUNTEERS NEEDED



We are currently searching for volunteers to serve as mentors for the Future City Competition for 7th & 8th grade held in conjunction with National Engineers' Week events. Each team of students needs an engineer mentor to guide them through the competition. A Future City mentor meets with the team and their teacher from October through Competition Day **Saturday, January 15, 2005**. Mentors generally devote about 30 hours to helping their team.

The Future City mentor, acting as an advisor, guides the students through the project development process assisting them to:

- Develop a plan and schedule for completion
- Divide and assign responsibilities for various tasks
- Solve problems that arise

The mentor teaches the students about the various engineering disciplines, and the role that engineers play in building and maintaining a city.

We are also searching for volunteers to serve as judges for both the Future City Competition for 7th & 8th grade and Rube Goldberg Machine contest for 9th - 12th graders. The Rube Goldberg Machine Contest will be held on **Friday, December 3, 2004**. If you would like to serve as a judge, please contact Mary Loera at (412) 434-3353. For more information about the competitions, please go to <http://futurecitypittsburgh.org/> and <http://www.westinghousenuclear.com/E6.asp>.

These are fun events, and we strongly encourage you to participate!

For additional information or to register, please contact Ms. Janet Henke, Carnegie Science Center, at (412) 237-1640 (email: [henkej@csc.clpgh.org](mailto:henkej@csc.clpgh.org)).

## CHAPTER DIRECTORS AND OFFICERS

Pittsburgh IIE Chapter 2004 Leadership Team (as of 5/25/04)									
POSITION	NAME	COMPANY	ADDRESS LINE1	LINE2	CITY	ST	ZIP	PHONE	EMAIL
Board	Angela Konop	FedEx Ground	1000 FedEx Dr.		Moon Township	PA	15108	412.859.2678	w angela.konop@fedex.com c
Board	Roman Hlutkowsky	FedEx Ground	1000 FedEx Dr.		Moon Township	PA	15108	412.262.6021	w roman.hlutkowsky@fedex.com c
Board	Bobbi Ferguson	Curtiss-Wright EMD	1000 Cheswick Ave.		Cheswick	PA	15024	724.275.5155	w bobbi.ferguson@emd.curtisswright.co m c
Board (1st Year)	Joe Kikta	Mellon Financial Corp.	151-1575 One Mellon Center		Pittsburgh	PA	15258	412.236.6193 412.889.1444	w kikta.is@mellon.com c
Board (1st Year)	Don Ziegler	GENCO	100 Papercraft Park		Pittsburgh	PA	15238	412.820.2296 412.956.2660	w ziedlerd@genco.com c
President	Jeff Arnold	H. B. Maynard & Co., Inc.	Eight Parkway Center	4th Floor	Pittsburgh	PA	15220	412.921.2400 x245 412.973.1748	w jarnold@hbmavnard.com c
Vice President	Mary Loera	PPG	One PPG Place	Building 5, Floor 5	Pittsburgh	PA	15272	412.434.3353 412.818.3032	w loera@ppg.com c
Secretary	Amy McHenry	H. B. Maynard & Co., Inc.	Eight Parkway Center	4th Floor	Pittsburgh	PA	15220	412.921.2400 x231 412.352.2431	w amchenry@hbmavnard.com c
Treasurer	Jennifer Palmiero	FedEx Ground	1000 FedEx Dr.		Moon Township	PA	15108	412.859.2836	w jennifer.palmiero@fedex.com c
Programs Chair	Karen Bursic	University of Pittsburgh	1048 Benedum Hall	Dept of IE	Pittsburgh	PA	15261	412.624.9837	w kbursic@engr.pitt.edu c
Programs	Doug Rabeneck	H. B. Maynard & Co., Inc.	Eight Parkway Center	4th Floor	Pittsburgh	PA	15220	412.921.2400 x146 412.999.9728	w drabeneck@hbmavnard.com c
Programs	Suzanne Moses	FedEx Ground	1000 FedEx Dr.		Moon Township	PA	15108	412.859.2325	w suzanne.moses@fedex.com c
Programs	Joe Kikta	Mellon Financial Corp.	151-1575 One Mellon Center		Pittsburgh	PA	15258	412.236.6193 412.889.1444	w kikta.is@mellon.com c
Programs	Barb Grabowski	Alcoa	201 Isabella St.		Pittsburgh	PA	15212	412.553.2229 412.303.8201	w barbara.grabowski@alcoa.com c
Membership Chair	Errol Restelli	H. B. Maynard & Co., Inc.	Eight Parkway Center	4th Floor	Pittsburgh	PA	15220	412.921.2400 x232 412.576.5594	w erestelli@hbmavnard.com c
Student Relations Chair	Bryan Norman	University of Pittsburgh	1033 Benedum Hall	Dept of IE	Pittsburgh	PA	15261	(412) 624-9841	w banorman@engr.pitt.edu c
Communications Chair	Pat Premick	H. B. Maynard & Co., Inc.	Eight Parkway Center	4th Floor	Pittsburgh	PA	15220	412.921.2400 x133 412.901.5487	w poremick@hbmavnard.com c
Web Master	Jay Rajgopal	University of Pittsburgh	1039 Benedum Hall	Dept of IE	Pittsburgh	PA	15261	412.624.9840	w rajgopal@pitt.edu c
Community Affairs Chair	Pat Kelly Lee	Toolkit Inspiration Point	500 Geyser Rd.		Pittsburgh	PA	15205	412.519.5409	w pkl@toolkitllc.com c

## IIE PITTSBURGH JOB BANK INFORMATION REQUEST

The purpose of the job bank is to match qualified IIE professionals with available jobs. In the past several years, we have been successful in placing IIE members with employers.

**If you or your company are looking for new employees**, send a description of the position you wish to fill to the address below. We will publish your position in our monthly newsletter. Please try to limit your descriptions to 50 words or less and include a phone number, address, fax number, and e-mail so interested parties can contact you directly. Please send all descriptions to:

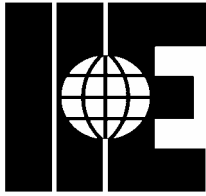
Pat Premick  
H. B. Maynard and Company, Inc.  
Eight Parkway Center  
Pittsburgh, PA 15220  
Phone: 412.921.2400 ext. 133  
[ppremick@hbmavnard.com](mailto:ppremick@hbmavnard.com)



You can also advertise your job openings on the Pittsburgh IIE Chapter website: <http://www.ie.pitt.edu/IIE/jobs.html>

**INSTITUTE OF  
INDUSTRIAL ENGINEERS**

**Pittsburgh Chapter  
Area I, District 5  
Number 3**



Eight Parkway Center  
Suite 400  
Pittsburgh, PA 15220

Pittsburgh Chapter IIE Website - [www.ie.pitt.edu/IIE](http://www.ie.pitt.edu/IIE)

National IIE Website - [www.iienet.org](http://www.iienet.org)

## 2004 Schedule of Events

<b>January 20</b>	Job Market & Opportunities in IIE – Panel Discussion
<b>February 11</b>	Bethlehem Haven Women’s Shelter & IIE Pittsburgh Process Improvement Initiative
<b>March 4</b>	Discussion of Lean Manufacturing/Tour of RMU Learning Factory
<b>April 13</b>	Networking Night
<b>May 27</b>	Joel Haight, the Penn State University, “Root Cause Analysis”
<b>June 29</b>	Pirates Game
<b>July</b>	No Meeting
<b>August 24</b>	Roger Freisleben, Senior Account Manager, H. B. Maynard and Company, Inc., “Utilizing Basic IE Concepts in Any Setting: A Third-World Country Coffee Plantation Case Study”
<b>October 7</b>	Student Chapter Night – Jeremy Weinstein, President-Elect of IIE and Corporate VP of Global Procurement Operations at Whirlpool Corporation
<b>November 11</b>	Tour / Speaker, Giant Eagle, Inc.